

EXHIBITION PREVIEW

ONEQ
LAUREN YS
MAKOTO CHI
STELLAR LEUNA

8- 31 OCT

OUTRE GALLERY (FITZROY)
319 SMITH STREET, FITZROY, MELBOURNE
WWW.OUTREGALLERY.COM
[@OUTREGALLERY](https://www.instagram.com/OUTREGALLERY)





EXHIBITION PREVIEW

ONEQ / LAUREN YS / MAKOTO CHI / STELLAR LEUNA

Thank you for your interest in Outré Gallery's latest showcase exhibition. We are excited to share with you these new works by - ONEQ, Lauren YS, Makoto Chi, and Stellar Leuna

If you are interested in purchasing an artwork, EMAIL us at info@outregallery.com (subject heading - **EXHIBITION PREVIEW**)

Please include your **NAME / CITY / COUNTRY / PHONE NUMBER** as well as your artwork preference/s

We do our very best to give people the option to purchase their first preference, but with limited artworks available and many eager collectors, this is not always possible. Listing a 2nd/and or 3rd preference increases your chances of being offered a piece. **Please also state if you are interested in purchasing multiple pieces.**

Once you have emailed your official expression of interest, please be patient with our response as it could take up to **48 hours** before we are able to get back to you.

**** higher resolution images are available on request at pete@outregallery.com**

- Pricing

Please note that all of the prices are in Australian Dollars and include tax. We have also listed an approximate USD pricing.

****NOTE** that the TAX will be deducted for all sales made from outside of Australia.

- Shipping & Handling

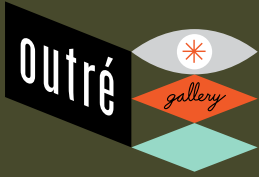
We can organise having your artwork safely delivered to you, otherwise they can be collected in person from our Fitzroy gallery. Artworks can be shipped via registered and insured Australian Post or Startack Express. Please note that the artwork prices do not include shipping but we would be more than happy to give you a quote prior to purchasing.

- Payment, lay-away & Afterpay

We can happily offer lay-by / lay-away with a minimum deposit of 50% deposit to all Australian and international customers. We accept all major credit cards and bank transfers as well as 'Afterpay' for online purchases. Sorry but we do not currently accept Paypal.

To secure an artwork, please contact the gallery to discuss terms and conditions.

We hope you enjoy the preview and we look forward to hearing from you.



UNERI BY ONEQ

ONEQ is an Okinawa-based artist who creates modern pin-up illustrations influenced by her youth spent on a very secluded Japanese island where she would spend her days dreaming of aquatic adventures and reading countless comics at a neighbor's home.

Completely self taught as an artist her work has taken the world by storm over the past two years as her aesthetic is altruistic in beauty and form, appealing to all those who pass by. 'Uneri' means undulation, surge of wave, and groove in terms of personal feeling.

'Uneri' means undulation, surge of wave, and groove in terms of personal feeling.

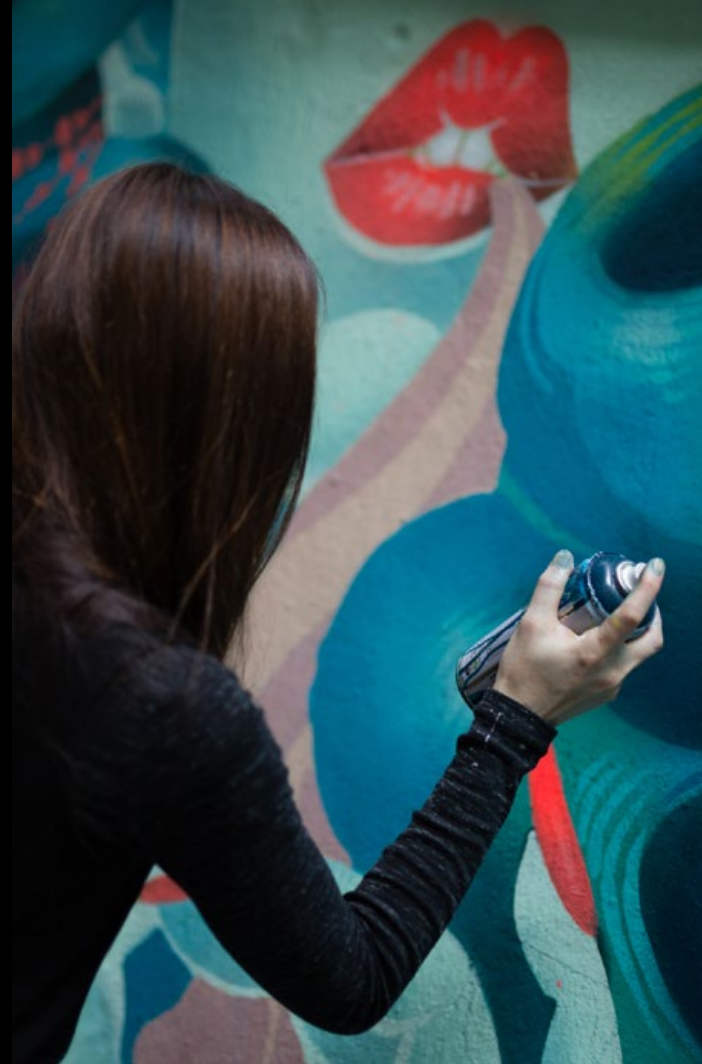
My works can be described as something akin to 'gyotaku' (traditional Japanese fish print which fishermen took as records of their catch).

I dive deep into the bottom of my psyche to find and capture the hidden monstrous ancient fish like creatures and lift them up to the surface to be seen.

When I create new work, I bring the surging waves of my soul and body into play to take a 'gyotaku' of this creature.

*This process feels strangely similar to some sort of primitive prayer.
The mind, body and the world move together constantly, billowing.
'Form and Undulation' or 'Stylistic beauty and Groove'.*

Find out more about ONEQ [here](#) in our latest interview.





ONEQ - Kotori

Acrylic and spray paint on wood panel
Artwork size: 77 x 77cm (approx 30.3" x 30.3")

AUD \$6150
(outside of Australia approx US\$4200)



ONEQ - UKA

Acrylic and spray paint on wood panel
Artwork size: 72 x 82cm (approx 28.3" x 32.3")

AUD \$5995
(outside of Australia approx US\$4100)



ONEQ - Zakuro

Acrylic and spray paint on wood panel
Artwork size: 56 x 94cm (approx 22" x 37")

AUD \$5550
(outside of Australia approx US\$3800)



ONEQ - Raika

Acrylic and spray paint on wood panel
 Artwork size: 71 x 78cm (approx 28" x 30.7")

AUD \$5995
 (outside of Australia approx US\$4100)



ONEQ - Kirico

Acrylic and spray paint on wood panel
Artwork size: 50 x 100cm (approx 19.6" x 39.3")

AUD \$5550
(outside of Australia approx US\$3800)





JĪNGSHÉN TRIPTYCH

BY LAUREN YS

Lauren YS is a Los Angeles-based artist whose work is influenced by multiple stages of focus, both geographically and in practice. With dynamic bouts in academics, literature and writing, teaching, illustration, and animation leading up to their arrival in the urban art sphere, the influences of these phases of their own career add up to a robust style of murals and fine art. Lauren's work is influenced by dreams, mythology, death, comics, love, sex, psychedelia, animation and their Asian-American heritage.

Find out more about Lauren YS [here](#) in our latest interview.



LAUREN YS





LAUREN YS - Guanyin 觀音

Ink on paper
Framed size: 58 x 69cm (approx 22.8" x 27.1")

AUD \$2550
(outside of Australia approx US\$1750)



LAUREN YS - Meng Po 孟婆

Ink on paper
Framed size: 58 x 69cm (approx 22.8" x 27.1")

AUD \$2550
(outside of Australia approx US\$1750)



LAUREN YS - Jiangshi 僵屍

Ink on paper
Framed size: 58 x 69cm (approx 22.8" x 27.1")

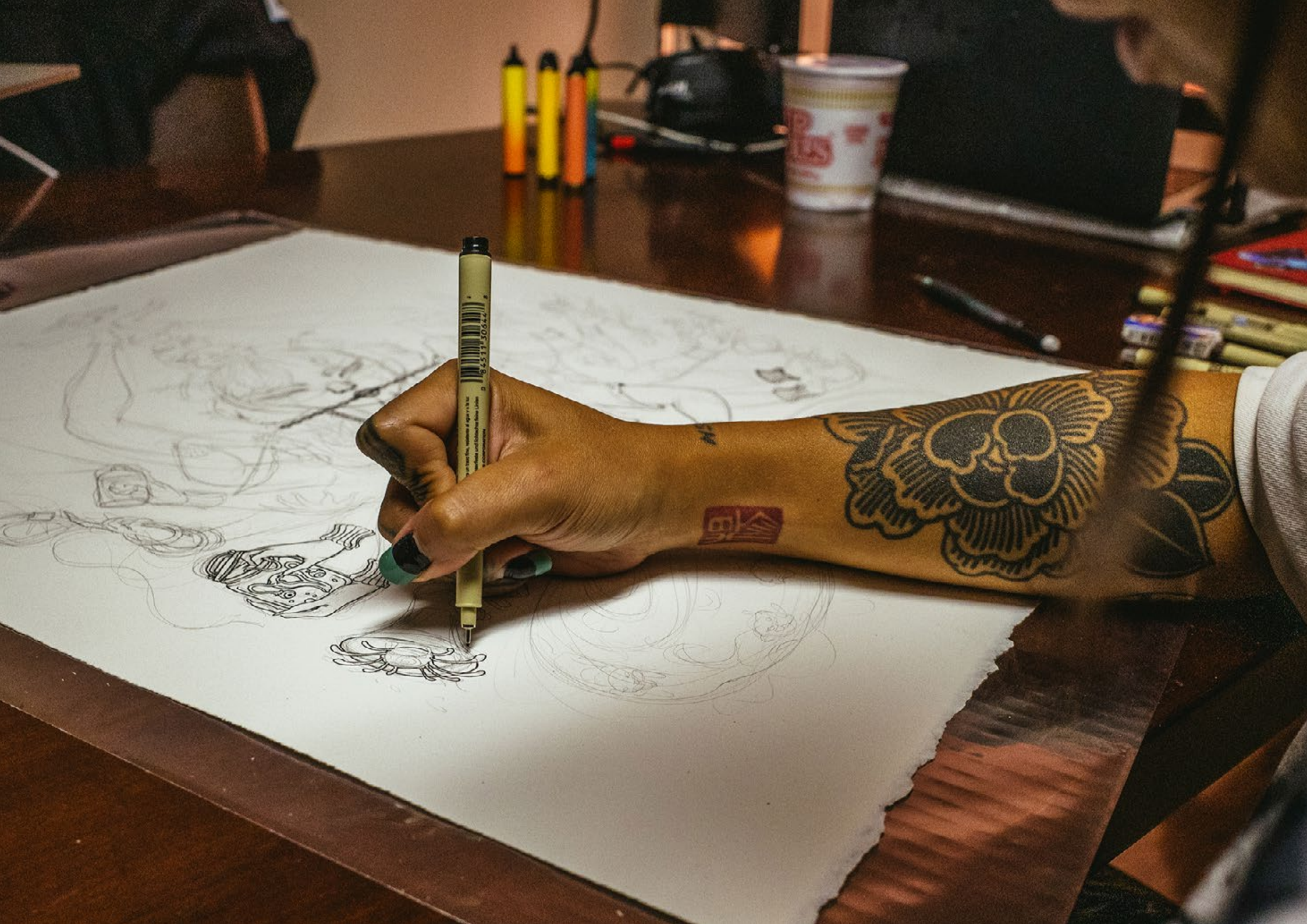
AUD \$2550
(outside of Australia approx US\$1750)



LAUREN YS / MAKOTO CHI (collaboration) - Vorpalsaphic

Ink on paper
Framed size: 75 x 59cm (approx 29.5" x 23.2")

AUD \$2300
(outside of Australia approx US\$1565)





IT'S A HARD WORLD FOR LITTLE THINGS BY MAKOTO CHI

Makoto Chi is a Canadian visual artist and tattooist of mixed Japanese and Jewish heritage, now based in Western Massachusetts, United States. Graduating from Emily Carr University with a Bachelor's Degree in Illustration in 2015, their image-making practice engages with the use of folkloric and fantastical figures to evoke emotive drama. Makoto takes interest in power relations and ontological distinctions between individuals, and explores the tension between the individual and their environment. While their flourishing tattoo practice was put on hold during the pandemic, they have returned to mark-making as a way to burrow into other worlds and revivify their process with magic, action and revolutionary thinking.

Find out more about Makoto Chi [here](#) in our latest interview.



MAKOTO CHI





MAKOTO CHI - Curse Your Name!

Ink and gouache on paper, mounted on wood panel
 Artwork size: 20 x 20cm (approx 8" x 8")

AUD \$575
 (outside of Australia approx US\$390)



MAKOTO CHI - Sometimes the World Cuts You Down

Ink and gouache on paper, mounted on wood panel
 Artwork size: 30.5 x 30.5cm (approx 12' x 12')

AUD \$740
 (outside of Australia approx US\$500)



MAKOTO CHI - Spore Baby

Ink and gouache on paper, mounted on wood panel
Artwork size: 20 x 20cm (approx 8" x 8")

AUD \$575
(outside of Australia approx US\$390)



MAKOTO CHI - Energy Drink

Ink and gouache on paper, mounted on wood panel
Artwork size: 20 x 20cm (approx 8" x 8")

AUD \$575
(outside of Australia approx US\$390)



MAKOTO CHI - Study 1

Ink and gouache on paper, mounted on wood panel
 Artwork size: 12 x 17cm (approx 4.7" x 6.7")

AUD \$260
 (outside of Australia approx US\$175)



MAKOTO CHI - Study 2

Ink and gouache on paper, mounted on wood panel
Artwork size: 17 x 12cm (approx 6.7" x 4.7")

AUD \$260
(outside of Australia approx US\$175)



MAKOTO CHI - Study 3

Ink and gouache on paper, mounted on wood panel
 Artwork size: 24 x 16cm (approx 9.4" x 6.2")

AUD \$295
 (outside of Australia approx US\$200)





MAGNOLIA FALLS

BY STELLAR LEUNA

Born in Kowloon, Hong Kong and raised in Sydney, Australia, Stellar Leuna has always been fascinated by what it means to “belong”, so unsurprisingly, coming-of-age themes are frequently visited subject matter in her work. Teenage girls, witches and demons all seem to live happily and harmoniously in a surreal black-and-white dystopia where the sun never rises. It is through a subtle dark humour that Stellar is able to illustrate her feelings on heavy subject matter such as alienation, rejection, romance, death and the afterlife - without deeply upsetting the viewer. Starting out in self-publishing her own art zines and designing merch for bands and local streetwear labels, her bold cartoony renditions of “satanic panic” imagery inspired by the covers of her favourite punk and heavy metal records makes her work appealing not just to those in the underground art world - a fact that has become evident since her collaboration with major fashion labels PRADA and Tiffany & Co in 2018.

Find out more about Stellar Leuna [here](#) in our latest interview.





STELLAR LEUNA - Magnolia Falls Welcome Sign

Ink on Arches watercolour paper
Framed size: 79 x 66cm (approx 31.1" x 25.9")

AUD \$1375
(outside of Australia approx US\$890)



STELLAR LEUNA - Greybridge Tunnel

Ink on Arches watercolour paper
Framed size: 66 x 79cm (approx 25.9" x 31.1")

AUD \$1485
(outside of Australia approx US\$960)



STELLAR LEUNA - Magnolia Motel

Ink on Arches watercolour paper
Framed size: 66 x 79cm (approx 25.9" x 31.1")

AUD \$1375
(outside of Australia approx US\$890)



STELLAR LEUNA - June's Diner

Ink on Arches watercolour paper
Framed size: 79 x 66cm (approx 31.1" x 25.9")

AUD \$1540
(outside of Australia approx US\$995)



STELLAR LEUNA - 1002 Orchard Lane

Ink on Arches watercolour paper
Framed size: 66 x 79cm (approx 25.9" x 31.1")

AUD \$1485
(outside of Australia approx US\$960)



STELLAR LEUNA - Corner of Bower Avenue and 14th Street

Ink on Arches watercolour paper
Framed size: 66 x 79cm (approx 25.9" x 31.1")

AUD \$1540
(outside of Australia approx US\$995)





THANK YOU

WE LOOK FORWARD TO HEARING FROM YOU

EMAIL: [INFO@OUTREGALLERY.COM](mailto:info@outregallery.com)

OUTRE GALLERY (FITZROY)
319 SMITH STREET, FITZROY, MELBOURNE
WWW.OUTREGALLERY.COM
[@OUTREGALLERY](https://www.instagram.com/outregallery)